

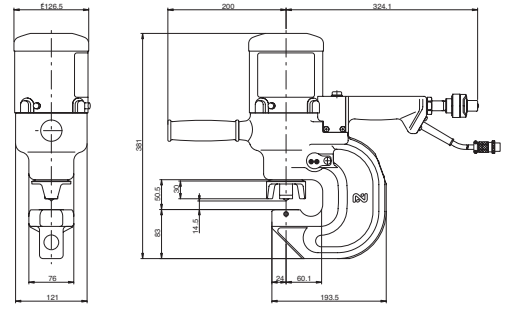
HA06-1322



MODEL

HA06-1322

HA06-1322



Specifications

| | | |
|---------------------------------------|---------------------------|--------------------|
| Model | | HA06-1322 |
| Max. Throat Depth | inch (mm) | 2-3/8" (60) |
| Punching Capacity (for Mild Steel) | Max. Punching Diameter | 7/8" (22) |
| | Max. Punching Thickness | 1/2" (13) |
| Hole Making Time | sec | Punching Time 10.5 |
| Allowable Max. pressure | psi (kg/cm ²) | 10,000 psi (700) |
| Max. Output | lbf (tf) | 68,355 (34) |
| Ram Stroke | inch (mm) | 53/64" (21) |
| Mass (Weight) | lbs (kg) | 47 (21.5) |

Standard Accessories for HA06-1322

- Hose cord assembly
- 22 mm "D" series punch & die
- Sub handle assembly
- Spanner wrench
- 4 mm Allen wrench
- Tool box

HA07-1624



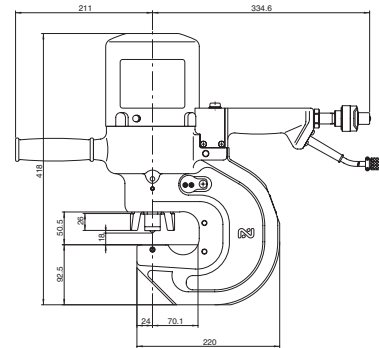
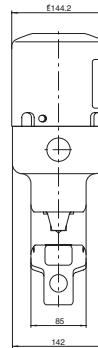
MODEL

HA07-1624

Specifications

| | | |
|---|--------------------------------|--------------------|
| Model | | HA07-1624 |
| Max. Throat Depth | inch (mm) | 2-3/4" (70) |
| Punching Capacity (for Mild Steel) | Max. Punching Diameter | 15/16" (24) |
| | Max. Punching Thickness | 5/8" (16) |
| Hole Making Time | sec | Punching Time 16.5 |
| Allowable Max. pressure | psi (kg/cm ²) | 10,000 psi (700) |
| Max. Output | lbf (tf) | 97,020 (49) |
| Ram Stroke | inch (mm) | 1" (25) |
| Mass (Weight) | lbs (kg) | 63 (28.5) |

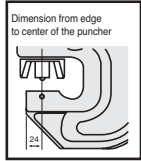
HA07-1624



Standard Accessories for HA07-1624

- Hose cord assembly
- 22 mm "D" series punch & die
- Sub handle assembly
- Spanner wrench
- 4 mm Allen wrench
- Tool box

HA11-1624



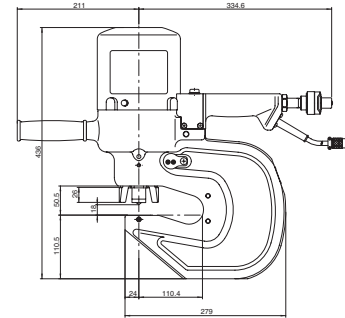
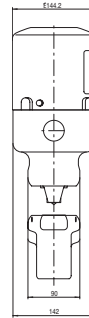
MODEL

HA11-1624

Specifications

| | | |
|---|--------------------------------|--------------------------|
| Model | HA11-1624 | |
| Max. Throat Depth | inch (mm) | 4-5/16" (110) |
| Punching Capacity (for Mild Steel) | Max. Punching Diameter | inch (mm) 15/16" (24) |
| | Max. Punching Thickness | inch (mm) 5/8" (16) |
| Hole Making Time | sec | Punching Time 16.5 |
| Allowable Max. pressure | psi (kgf/cm ²) | 10,000 psi (700) |
| Max. Output | lbf (tf) | 97,020 (49) |
| Ram Stroke | inch (mm) | 1" (25) |
| Mass (Weight) | lbs (kg) | 78 (35.5) |

HA11-1624



Standard Accessories for HA11-1624

- Hose cord assembly
- 22 mm "D" series punch & die
- Sub handle assembly
- Spanner wrench
- 4 mm Allen wrench
- Tool box

SC-05 Portable Hydraulic Pump

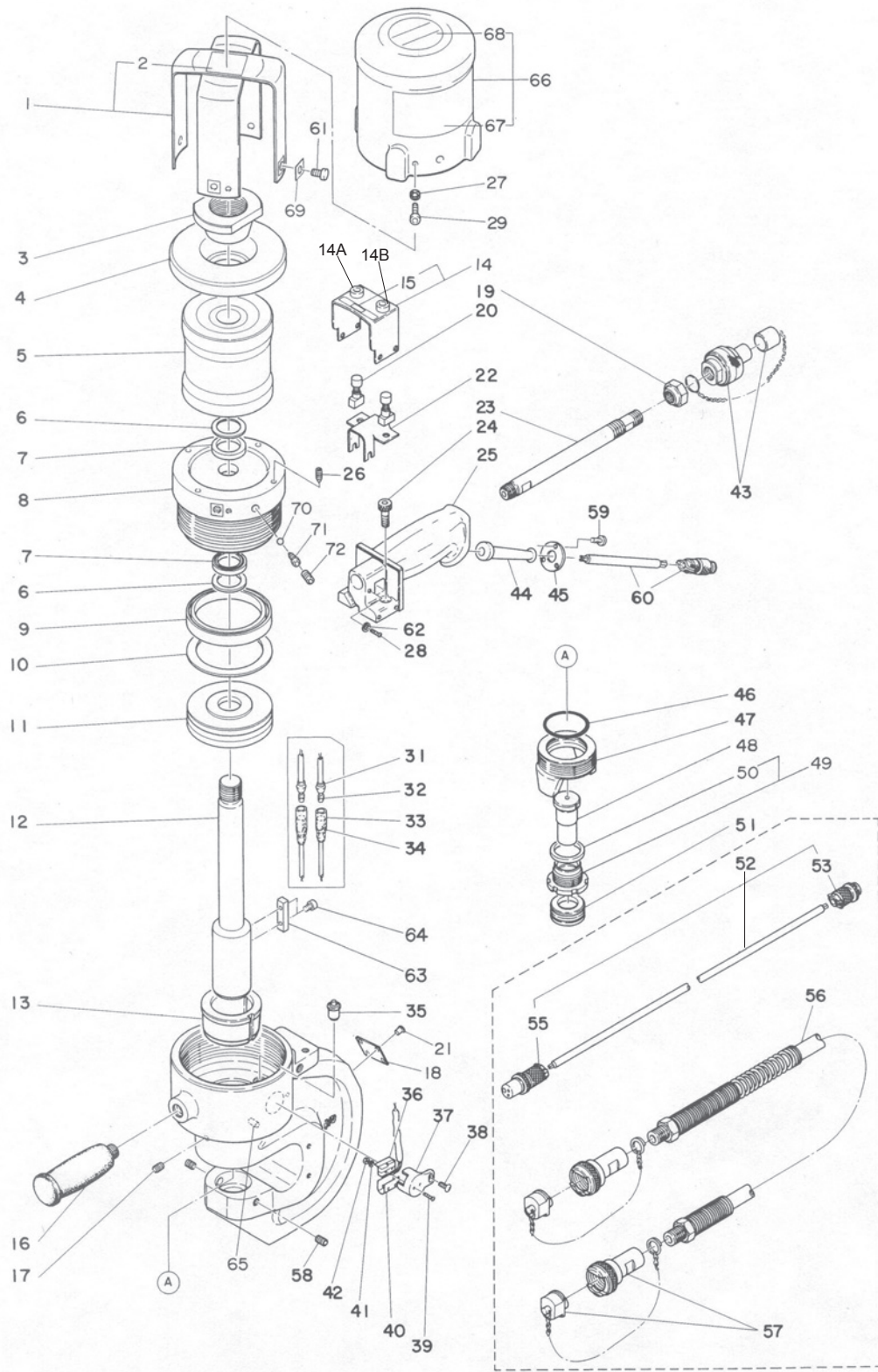
Single-Acting Hydraulic Pump for HA Series Punches



Specifications

| | | | |
|--|---------------------|--------------------|-----------------|
| Model | | SC-05 | |
| Power Source (Single Phase) | | 115V AC 50/60Hz | 230V AC 50/60Hz |
| Max. Output Pressure psi (kgf/cm ²) | | 10,000 (700) | |
| Output | At No Load | 60Hz qt/min | 1.28 |
| | At 10,000psi | 60Hz qt/min | 0.59 |
| Motor | | 0.4kW 4P | |
| Reservoir Capacity qt | | 4.26 | |
| Discharge Port | | Rc (PT) 3/8 | |
| Mass (Weight) with oil lbs (kg) | | 60 (27.5) | |

SELFER ACE HA07-1624/HA11-1624 ASSEMBLY



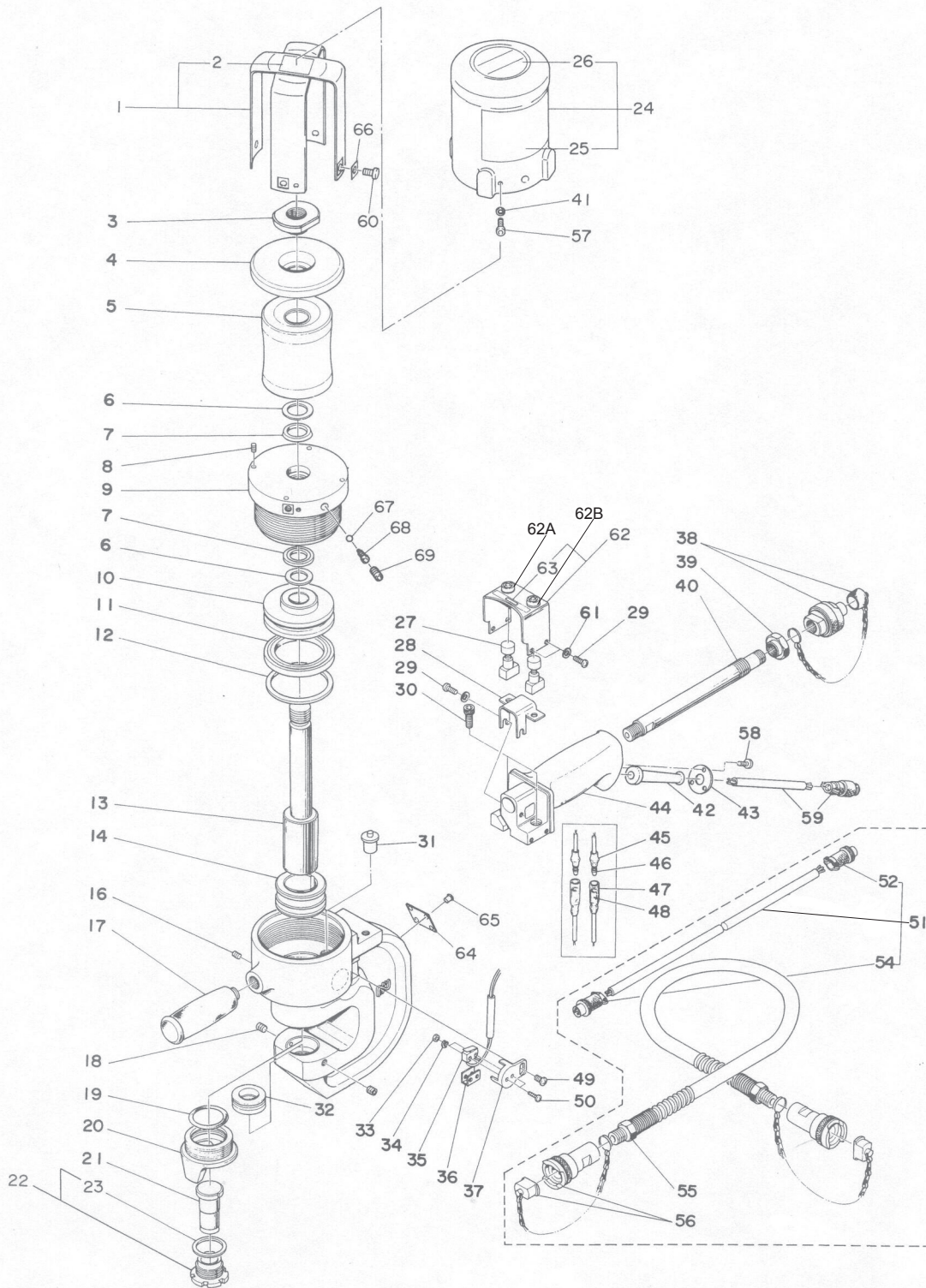
SELFER ACE HA07-1624/HA11-1624 PARTS LIST

The parts numbers with () are included in the Ass'y parts written above them.

| No. | Part No. | Part Name | Q'ty | Price |
|-----|-----------|----------------------------------|-------|-------|
| 1 | TB04929 | Inner Cover Ass'y | 1 set | |
| 2 | (TQ06572) | Caution – Inner Cover Label | 1 | |
| 3 | TP13074 | Nut M27 | 1 | |
| 4 | TP13073 | Upper Plate | 1 | |
| 5 | TB00273 | Return Cushion Ass'y 106.5 | 1 | |
| 6 | TP07772 | Back-up Ring 28 X 35.5 X 1.25 | 2 | |
| 7 | TP07771 | U Packing UHS-28 | 2 | |
| 8 | TQ04516 | Cap | 1 | |
| 9 | TP07768 | U Packing UHS-85 | 1 | |
| 10 | TP07769 | Back-up Ring 85 X 100 X 2 T2 | 1 | |
| 11 | TP08557 | Piston | 1 | |
| 12 | TP13078 | Ram (Keyed) | 1 | |
| 13 | TP14084 | Bushing (Keyed) | 1 | |
| 14 | TB04925 | Switch Cover Ass'y | 1 set | |
| 15 | (TP08411) | Switch Label | 1 | |
| 14A | TP10877 | Black Cap (Start Button Cover) | 1 | |
| 14B | TP10878 | Red Cap (Stop Button Cover) | 1 | |
| 17 | TP06397 | Hex Screw 6 X 8 | 1 | |
| 18 | TQ06613 | Plate Model Number (HA07-1624) | 1 | |
| | TQ06570 | Plate Model Number (HA11-1624) | 1 | |
| 19 | TP07793 | Set Screw | 1 | |
| 20 | TQ06476 | Push Button Switch MB2011 | 2 | |
| 21 | TP05136 | Drive Rivet No.2 X 4.8 | 4 | |
| 22 | TP13750 | Bracket | 1 | |
| 23 | TP07792 | Nipple PT3/8 X PT3/8 Special | 1 | |
| 24 | TP01460 | Hex. Bolt 8 X 20 | 2 | |
| 25 | TQ03522 | Hand Grip | 1 | |
| 26 | TP07773 | Hex. Socket Screw | 4 | |
| 27 | TQ03545 | Conical Spring Washer M | 4 | |
| 28 | TP05119 | + Screw 5 X 8 | 6 | |
| 29 | TP01644 | Hex. Socket Head Bolt 6 X 12 | 4 | |
| 31 | TP08188 | Insulating Sleeve Plug | 2 | |
| 32 | TP08186 | Connection Plug | 2 | |
| 33 | TP08189 | Insulating Sleeve Receptacle | 2 | |
| 34 | TP08187 | Receptacle 170021-1 | 2 | |
| 35 | TA93768 | Push Rod Ass'y | 1 set | |
| 36 | TP11442 | Limit Switch | 1 | |
| 37 | TP07783 | Limit Switch Cover | 1 | |
| 38 | TP02419 | + Screw 6 X 10 | 1 | |
| 39 | TP07784 | + Screw 2.3 X 15 | 2 | |
| 40 | TP08135 | Paper for Insulation | 1 | |
| 41 | TP07785 | Spring Lock Washer M2.3 | 2 | |
| 42 | TP08139 | Hex. Nut M2.3 | 2 | |
| 43 | CA94119 | 700R-3P Cupla w/Cap | 1 set | |
| 44 | TP12928 | Cord Sleeve | 1 | |
| 45 | TP12929 | Stopper | 1 | |
| 46 | TP07786 | O Ring P-46 | 1 | |
| 47 | TP07774 | Stripper | 1 | |
| 49 | TA99036 | Lock Nut Ass'y | 1 set | |
| 50 | (TP07009) | Urethane Washer 31 X 40 X 3.1 | 1 | |
| 58 | TP09458 | Hex. Screw 8 X 14 | 2 | |
| 59 | TP06342 | Hex. Bolt 4 X 10 | 3 | |
| 60 | TA94434 | Metal Adapter Ass'y | 1 set | |
| | (TA08712) | Metal Concent Adapter NCS-163-AD | 1 | |
| 61 | TQ03526 | LR Cap Screw 8 X 12 | 4 | |
| 62 | TP03508 | Washer M5 | 6 | |
| 63 | TP12944 | Key 10 X 8 X 42 | 1 | |
| 64 | TP06342 | Hex Bolt 4 X 10 | 2 | |
| 65 | TP14090 | Pin 7 X 12 | 1 | |
| 66 | TB04996 | Cover Ass'y (HA07-1624) | 1 set | |
| | TB04928 | Cover Ass'y (HA11-1624) | 1 set | |
| 67 | (TQ06571) | Caution Label | 1 | |
| 68 | (TQ03565) | Model Number Label (HA07-1624) | 1 | |
| | (TQ03564) | Model Number Label (HA11-1624) | 1 | |
| 69 | TQ03855 | Oblong Washer | 4 | |
| 70 | CP01181 | Ball 5/32 | 1 | |
| 71 | TP05154 | Drain Screw | 1 | |
| 72 | TP07843 | Hex. Screw 8 X 8 | 1 | |

| ACCESSORIES | | | | |
|-------------|-----------|--------------------------|--------|-------|
| No. | Part No. | Part Name | Q'ty | Price |
| 16 | TA92089 | Sub Handle Ass'y | 1 set | |
| 52 | TA93778 | Switch Cord Ass'y | 1 set | |
| 53 | (TP07795) | Metal Receptacle Plug | 1 | |
| 55 | (TP07796) | Metal Receptacle Plug | 1 | |
| 56 | TP05184 | Ultra-High Pressure Hose | 1 | |
| 57 | CA94118 | 700R-3S Cupla w/Cap | 2 sets | |
| | TP06012 | Spanner | 1 | |
| | TP10198 | Tool Box 285 X 125 X 62 | 1 | |
| | TP01939 | Hex Wrench Key 4 | 1 | |
| 48 | TJ06676 | Punch 22 | 1 | |
| 51 | TJ06677 | Die 22 | 1 | |
| | TQ06573 | Instruction Manual | 1 | |

SELFER ACE HA06-1322 ASSEMBLY



SELFER ACE HA06-1322 PARTS LIST

The parts numbers with () are included in the Ass'y parts written above them.

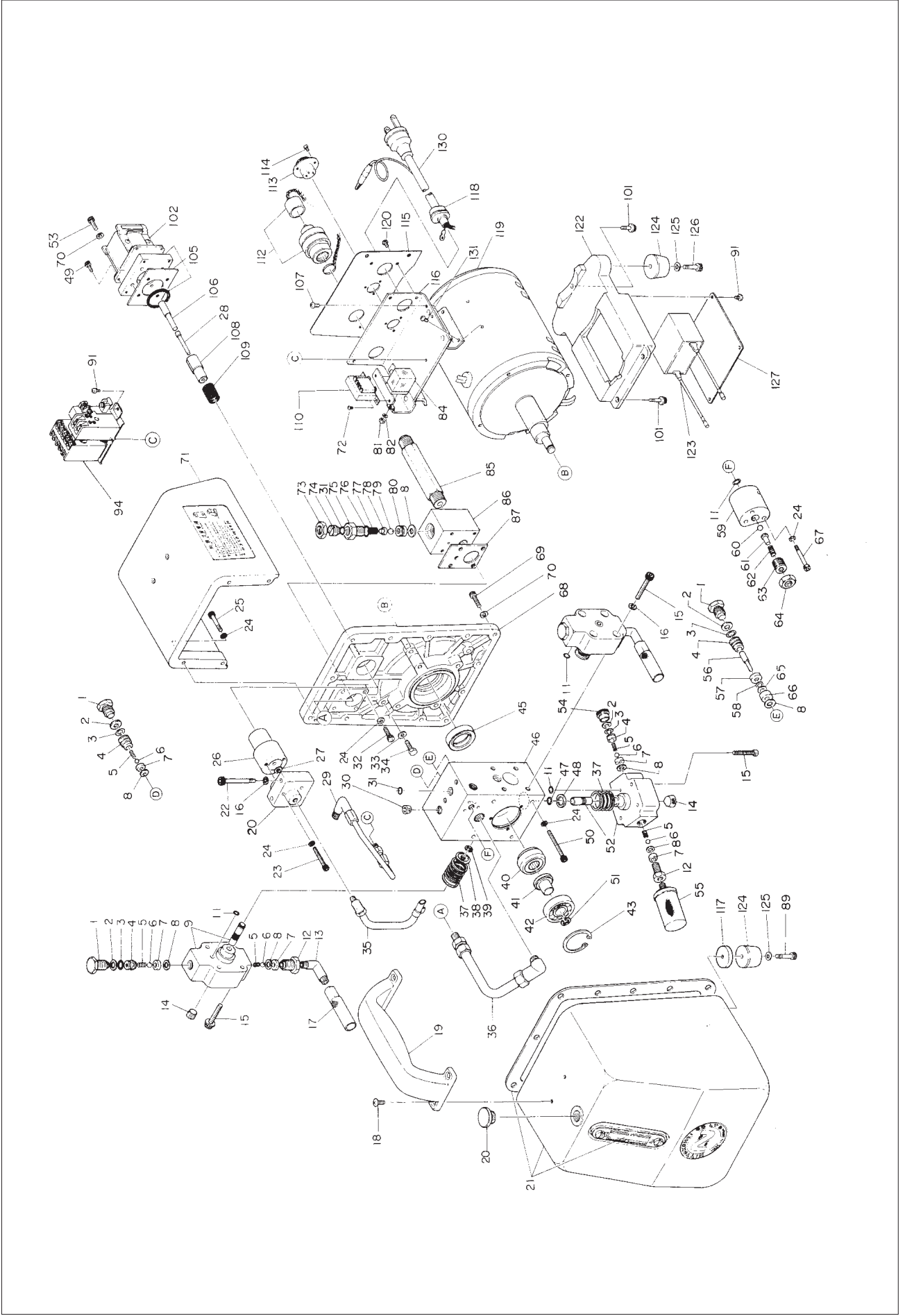
| No. | Part No. | Part Name | Q'ty | Price |
|-----|-----------|-------------------------------|-------|-------|
| 1 | TB04990 | Inner Cover Ass'y | 1 set | |
| 2 | (TQ06572) | Caution Inner Cover Label | 1 | |
| 3 | TP08301 | Nut M24 | 1 | |
| 4 | TP13073 | Upper Plate | 1 | |
| 5 | TP08299 | Return Cushion 96.5 | 1 | |
| 6 | TP08313 | Back-up Ring 25 X 33 X 1.25 | 2 | |
| 7 | TP08312 | U Packing UHS-25 | 2 | |
| 8 | TP06258 | Hex Screw 5 X 8 | 4 | |
| 9 | TQ04515 | Cap | 1 | |
| 10 | TP08303 | Piston | 1 | |
| 11 | TP08309 | U Packing US-67 | 1 | |
| 12 | TP08310 | Back-up Ring 67 X 82 X 2 T2 | 1 | |
| 13 | TP08308 | Ram | 1 | |
| 14 | TP08307 | Bushing | 1 | |
| 16 | TP06397 | Hex Screw 6 X 8 | 1 | |
| 18 | TP09458 | Hex Screw 8 X 14 | 1 | |
| 19 | TP08520 | O Riing P-42 | 1 | |
| 20 | TP08305 | Stripper | 1 | |
| 22 | TA99036 | Lock Nut Ass'y | 1 set | |
| 23 | TP07009 | Urethane Washer 31 X 40 X 3.1 | 1 | |
| 24 | TB04989 | Cover Ass'y | 1 set | |
| 25 | (TQ06571) | Caution Label | 1 | |
| 26 | (TQ03540) | Model Number Label | 1 | |
| 27 | TP03751 | Push Switch MB2011 L/B | 2 | |
| 28 | TP13750 | Bracket | 1 | |
| 29 | TP05119 | + Screw 5 X 8 | 6 | |
| 30 | TP01460 | Hex Bolt 8 X 20 | 2 | |
| 31 | TA94558 | Push Rod Ass'y | 1 set | |
| 33 | TP08139 | Hex Nut M2.3 | 2 | |
| 34 | TP07785 | Spring Lock Washer M2.3 | 2 | |
| 35 | TP11442 | Limit Switch | 1 | |
| 36 | TP08135 | Paper for Insulation | 1 | |
| 37 | TP07783 | Limit Switch Cover | 1 | |
| 38 | CA94119 | 700R-3P Cupla w/Cap | 1 set | |
| 39 | TP07793 | Set Screw | 1 | |
| 40 | TP07792 | Nipple PT3/8 X PT3/8 | 1 | |
| 41 | TQ03545 | Conical Spring Washer M6 | 4 | |
| 42 | TP12928 | Cord Sleeve | 1 | |
| 43 | TP12929 | Stopper | 1 | |
| 44 | TQ03522 | Grip | 1 | |
| 45 | TP08188 | Insulating Sleeve Plug | 2 | |
| 46 | TP08186 | Connection Plug | 2 | |
| 47 | TP08189 | Insulating Sleeve Receptacle | 2 | |
| 48 | TP08187 | Receptacle 170021-1 | 2 | |
| 49 | TP02419 | + Screw 6 X 10 | 1 | |
| 50 | TP07784 | + Screw 2.3 X 15 | 2 | |
| 57 | TP01644 | Hex. Socket Head Bolt 6 X 12 | 4 | |

| No. | Part No. | Part Name | Q'ty | Price |
|-----|-----------|--------------------------------|-------|-------|
| 58 | TP06342 | Hex Bolt 4 X 10 | 3 | |
| 59 | TA94434 | Metal Adapter Ass'y | 1 set | |
| | (TP08712) | Metal Receptacle Adapter | 1 | |
| 60 | TQ03526 | LR Cap Screw 8 X 12 | 4 | |
| 61 | TP03508 | Washer M5 | 6 | |
| 62 | TB04925 | Switch Cover Ass'y | 1 set | |
| 63 | (TP08411) | Switch Label | 1 | |
| 62A | TP10877 | Black Cap (Start Button Cover) | 1 | |
| 62B | TP10878 | Red Cap (Stop Button Cover) | 1 | |
| 64 | TQ06612 | Plate Model Number | 1 | |
| 65 | TP05136 | Drive Rivet No.2 X 4.8 | 4 | |
| 66 | TQ03855 | Oblong Washer | 1 | |
| 67 | CP01181 | Ball 5/32 | 1 | |
| 68 | TP05154 | Drain Screw | 1 | |
| 69 | TP07843 | Hex Screw 8 X 8 | 1 | |

ACCESSORIES

| | | | | |
|----|-----------|--------------------------|--------|--|
| 17 | TA92089 | Sub Handle Ass'y | 1 set | |
| 51 | TA93778 | Switch Cord Ass'y | 1 set | |
| 52 | (TP07795) | Metal Receptacle Plug | 1 | |
| 54 | (TP07796) | Metal Receptacle Plug | 1 | |
| 55 | TP05184 | Ultra-High Pressure Hose | 1 | |
| 56 | CA94118 | 700R-3S Cupla w/Cap | 2 sets | |
| | TP06012 | Spanner | 1 | |
| | TP10198 | Tool Box 285 X 125 X 62 | 1 | |
| | TP01939 | Hex Wrench Key 4 | 1 | |
| 21 | TJ06676 | Punch 22 | 1 | |
| 22 | TJ06677 | Die 22 | 1 | |
| | TQ06573 | Instruction Manual | 1 | |

PUMP SC-05 ASSEMBLY AND PARTS LIST



The part numbers with () are included in the Assy parts written above them.

| No. | Part No. | Part Name | Q'ty | Price |
|-----|----------|------------------------------|--------|-------|
| 1 | TP05874 | Check Set Plug | 4 | |
| 2 | TP05873 | Back-up Ring P-10 | 5 | |
| 3 | TP05872 | O-Ring P-10 | 5 | |
| 4 | TP05871 | Delivery Valve | 5 | |
| 5 | TP05870 | Spring 0.3 X 5 X 7 | 2 | |
| 6 | CP00800 | Ball 1/4 | 7 | |
| 7 | TP05869 | Valve Seat | 7 | |
| 8 | TP05868 | Packing | 9 | |
| 9 | TA9A586 | Cylinder Piston Sub Assy | 2 sets | |
| 11 | TP05878 | O Ring P-8 | 3 | |
| 12 | TP05875 | Suction Valve | 3 | |
| 13 | TP05876 | Elbow PT1/8 X PF1/4 | 2 | |
| 14 | TP05863 | Hex. Screw PT1/4 | 3 | |
| 15 | TQ03341 | Hex. Bolt 6 X 30 | 12 | |
| 16 | TP00629 | Spring Washer M6 | 2 | |
| 17 | TP05877 | Filter | 2 | |
| 18 | CP20661 | + Screw 6 X 16 | 4 | |
| 19 | TQ01323 | Hand Grip | 1 | |
| 20 | TA9A587 | Valve Spool Sub Assy | 1 | |
| 21 | TA97817 | Oil Tank Assy | 1set | |
| 22 | TP05903 | Hex. Bolt 6 X 60 | 2 | |
| 23 | TP05882 | Hex. Bolt 5 X 35 | 3 | |
| 24 | TP00513 | Spring Washer M5 | 10 | |
| 25 | TQ00873 | Hex. Socket Head Bolt 5 X 22 | 4 | |
| 26 | TP05881 | Plunger Guide | 1 | |
| 27 | TP05880 | Miniature Y Packing MY-3 | 1 | |
| 28 | TQ02883 | Valve Spool | 1 set | |
| 29 | TA94198 | Steel Pipe Assy | 1 set | |
| 30 | TP06597 | Hex. Screw PT1/8 | 1 | |
| 31 | TP05949 | O Ring P-7 | 3 | |
| 32 | TP08013 | Hex. Bolt 5 X 25 | 4 | |
| 33 | TP05853 | Seat Washer W5 | 4 | |
| 34 | TP13247 | Hex. Bolt 5 X 22 | 4 | |
| 35 | TA92455 | Copper Pipe Assy | 1 set | |
| 36 | TA92456 | Steel Pipe Assy | 1 set | |
| 37 | TP05865 | Piston Spring | 3 | |
| 38 | TP05866 | Spring Seat | 2 | |
| 39 | TP05867 | Retaining Ring E-64 | 2 | |
| 40 | TP09671 | Track Follower | 1 | |
| 41 | TP09672 | Distance Collar | 1 | |
| 42 | TP05928 | Ball Bearing 6302 | 1 | |
| 43 | CP01086 | Internal Retaining Ring C | 1 | |
| 45 | TP05856 | Oil Seal S 25 X 38 X 8 | 1 | |
| 46 | TQ01320 | Pump Body | 1 | |

| No. | Part No. | Part Name | Q'ty | Price |
|-----|----------|-----------------------------------|-------|-------|
| 47 | TP07962 | Retaining Ring WR-11 | 1 | |
| 48 | TP07961 | Spring Seat | 1 | |
| 49 | TQ03328 | Hex. Socket Head Cap Screw 5 X 12 | 4 | |
| 50 | TP05857 | Hex. Bolt 5 X 70 | 4 | |
| 51 | TP09673 | E Ring 10 | 1 | |
| 52 | TA9A603 | L Cylinder Piston Sub Assy | 1 set | |
| 53 | TP01945 | Hex. Bolt 5 X 12 | 5 | |
| 54 | TP07963 | Check Set Plug | 1 | |
| 55 | TP07964 | Suction Filter | 1 | |
| 56 | TP06619 | Spool | 1 | |
| 57 | TP06620 | Valve Sleeve Plate | 1 | |
| 58 | CQ15608 | O Ring P-6 | 1 | |
| 59 | TP06632 | Unloader Valve | 1 | |
| 60 | TP06633 | Ball 5/16 | 1 | |
| 61 | TP07966 | Ball Retainer | 1 | |
| 62 | TP07967 | Spring 2 X 7 X 25.2 | 1 | |
| 63 | TQ03407 | Hex Bolt 12 X 15 | 1 | |
| 64 | TP05422 | Hex. Nut M12 | 1 | |
| 65 | TP06618 | Back-up Ring P-6 | 1 | |
| 66 | TP06616 | Valve Sleeve | 1 | |
| 67 | TP06637 | Hex. Bolt 5 X 40 | 3 | |
| 68 | TQ01319 | Bracket | 1 | |
| 69 | TP02863 | Hex. Bolt 5 X 20 | 13 | |
| 70 | TP05950 | Copper Washer 5.5 X 8.5 X 1 | 17 | |
| 71 | TP12671 | Switch Cover | 1 | |
| 72 | FS00463 | Pan Head Screw 3 X 6 | 2 | |
| 73 | TP05893 | Lock Nut | 1 | |
| 74 | TP05892 | Adjust Screw | 1 | |
| 75 | TP05889 | Relief Valve | 1 | |
| 76 | TP12010 | O Ring P-14 | 1 | |
| 77 | TP05891 | Relief Spring | 1 | |
| 78 | TP05890 | Ball Retainer | 1 | |
| 79 | TP05948 | Ball 9/32 | 1 | |
| 80 | TP05888 | Relief Valve Sheet | 1 | |
| 81 | TP08266 | Hex. Nut M2.6 | 1 | |
| 82 | TP08267 | Toothed Lock Washer M2.6 | 1 | |
| 84 | TP08264 | Relay MPM-200 | 1 | |
| 85 | TP05919 | Nipple | 1 | |
| 86 | TP05887 | Relief Valve Body | 1 | |
| 87 | TP05904 | Gasket | 1 | |
| 89 | TP03086 | Hex. Bolt 6 X 20 | 2 | |
| 91 | TQ03193 | Pan Head Screw 4 X 6 | 6 | |
| | TA98690 | Magnet Switch Assy (115V) | 1 set | |
| 94 | TA98692 | Magnet Switch (230V) | 1 set | |

| No. | Part No. | Part Name | Q'ty | Price |
|-----|----------|-------------------------------|-------|-------|
| 101 | TQ03329 | Hex. Bolt 5 X 15 | 3 | |
| 102 | TP08395 | Solenoid AV40 (115V) | 1 | |
| | TP07677 | Solenoid AV40 (230V) | 1 | |
| 105 | TA94480 | Plate Assy | 1 set | |
| 106 | TP05886 | Rod | 1 | |
| 107 | LP08489 | + Screw 4 X 6 | 1 | |
| 108 | TP05884 | Plunger | 1 | |
| 109 | TP05883 | Return Spring | 1 | |
| | TP12354 | Transformer (100-115V) | 1 | |
| 110 | TP12353 | Transformer (200-230V) | 1 | |
| 112 | CA94118 | 700R-3S Cupla w/Cap | 1 set | |
| 113 | TP07969 | Metal Receptacle | 1 | |
| 114 | TP02902 | + Screw 3 X 6 | 3 | |
| 115 | TP08397 | Name Plate | 1 | |
| 116 | TQ00393 | Switch Plate | 1 | |
| 117 | TP09669 | Spacer 6.5 X 28 X 5 | 2 | |
| 118 | TP01757 | Cord Stopper | 1 | |
| 119 | TA97964 | Motor Assy (115V) | 1 set | |
| | TA97968 | Motor Assy (220-240V) | 1 set | |
| 120 | TP00056 | + Screw 3 X 6 | 4 | |
| 122 | TQ01321 | Condenser Box | 1 | |
| 123 | TB04312 | Condenser Assy | 1 set | |
| 124 | TP05925 | Rubber Foot | 4 | |
| 125 | TP05926 | Washer 6.5 X 10 X 1 | 4 | |
| 126 | TP07118 | Hex. Bolt 6 X 16 | 2 | |
| 127 | TQ01322 | Condenser Cover | 1 | |
| | TA9A758 | Cabtyre Cable Assy | 1 set | |
| 130 | TA9A758 | Cabtyre Cable Assy (220-240V) | 1 set | |
| 131 | LQ00190 | + Pan Head Screw 4 X 8 | 4 | |

ACCESSORIES

| No. | Part No. | Part Name | Q'ty | Price |
|-----|----------|------------------------|-------|-------|
| 20 | TA92729 | Auxiliary Oil Can Assy | 1 set | |
| | TP05929 | Oil Cap | 1 | |
| | TP03249 | Hex Wrench Key 8 | 1 | |